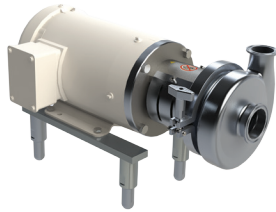


Chemical

BC/BP Series Centrifugal Pumps



Applications:

- unloading
- transfer
- CIP supply

Materials:

- 316L
- buna, EPDM, silicone and FKM elastomers

Features:

- impeller retainer or threaded impeller nut options
- stamped volute
- wet ends, motor pump units and carts
- 3A & CIPable

Sizes:

- inlet 1½" to 6"
- outlet 1½" to 4"

RZL Series Positive Displacement Pumps



Applications:

- unloading
- transfer
- metering
- CIP supply

Material:

- 316L

Features:

- front loading seals
- various rotor options
- 1" - 4" models stainless steel gear box standard
- 3A & EHEDG
- 100% CIPable

Sizes:

- 1" to 10"

Ball Valves



Applications:

- isolation
- diversion
- control

Materials:

- stainless steel and brass

Features:

- sanitary
- industrial
- 2-piece and 3-piece design
- various actuator and control packages

Sizes:

- ¼" to 4"

Industrial Butterfly Valves



Lug Butterfly Valve



Wafer Butterfly Valve

Applications:

- isolation
- control

Materials:

- cast iron, stainless steel, aluminum, ductile iron and more

Features:

- various body, disc and seat material options
- ISO 5211 mounting pad
- various actuator and control packages

Sizes:

- 1" to 36"

Chemical

ExD Series "The Hawk" High Efficiency Centrifugal Pump

**Applications:**

- CIP
- fluid transfer
- filling

Materials:

- 316L
- buna, EPDM, silicone and FKM elastomers

Features:

- nut-less impeller and leak detection port
- adjustable discharge port 105° without disassembly of casing and front cover
- 3A and CIPable

Sizes:

- inlet 1" to 4"
- outlet 1" to 2 ½"

Safety Relief Valves

**Application:**

- protect against pressure build up

Material:

- 316L

Features:

- TUV certification
- valve body from solid bar
- manual override
- pneumatic operator available

Sizes:

- 1" to 2½"

Industrial Stainless Steel Wafer Ball Valves

**Applications:**

- isolation
- control
- full flow

Material:

- CF8M

Feature:

- alternative to a butterfly valve

Sizes:

- 1" to 4"

Weld Fittings

**Materials:**

- 304 and 316L

Finish:

- 3A sanitary finish ID and OD
- unpolished

Sizes:

- ½" to 12"

Dixon®, founded in 1916, is a premier manufacturer and supplier of hose couplings, valves, dry-disconnects, swivels, and other fluid transfer and control products. The company's global reach includes a wide range of products for numerous industries including petroleum exploration, refining, transportation, chemical processing, food & beverage, steel, fire protection, construction, mining and manufacturing. Dixon®'s strategic objective is to create solutions that make products safer, leak-free, longer lasting, and always available.

dixonvalve.com • *Customer Service:* **800.789.1718**

Dixon Sanitary

N25 W23040 Paul Road, Pewaukee, WI 53072

Fax: 800.789.4046

sanitarysales@dixonvalve.com

For complete catalog and literature downloads go to dixonvalve.com

